

The Schedule Manager's Workflow

NIS4 provides you with the tools to efficiently build your channel's multi-platform schedules.

- ◆ One interface to schedule television, radio and other platforms
- ◆ Import or copy full or partial schedules
- ◆ Easily add, copy or move programmes, complete with templates
- ◆ Automated assistance for re-runs and series scheduling
- ◆ Automatic or manual schedule export to multiple systems

As a schedule manager your responsibility is to build one or more channel schedules weeks or months in advance. You need to be able to import schedules, insert new programmes, schedule series and re-runs, and add live programmes that have their own rundowns. These schedules then need to be previewed and exported to multiple external systems, including your playout automation, EPG and web CMS. This is why NIS4 is so helpful to your role as a schedule manager, providing you with the tools to efficiently build and export schedules for television, radio, web and other platforms...

One interface to build schedules for all your platforms - Select the platform you wish to build and develop the schedule for (television, radio, web etc.) from the vertical NIS4 menu and then select the required day on the NIS4 Guide. Now you can start building or managing the appropriate schedule. Moving between platforms is as simple as a few clicks.

Importing and copying partial or full schedules — NIS4 enables you to import pre-defined schedules from external sources, such as air-time sales systems. Recognising that often your schedule structure may also change little week to week, copying the schedule from, say, one week to another in NIS4 is as simple as a few mouse clicks.

Manually adding new programmes - With a single mouse click create a new Program Card. Enter the program details — from top level information such as the title, type (live, disk etc), category (news, sports etc) and start time to more detailed information such as the MOS configuration and whether the program should be included in the EPG.

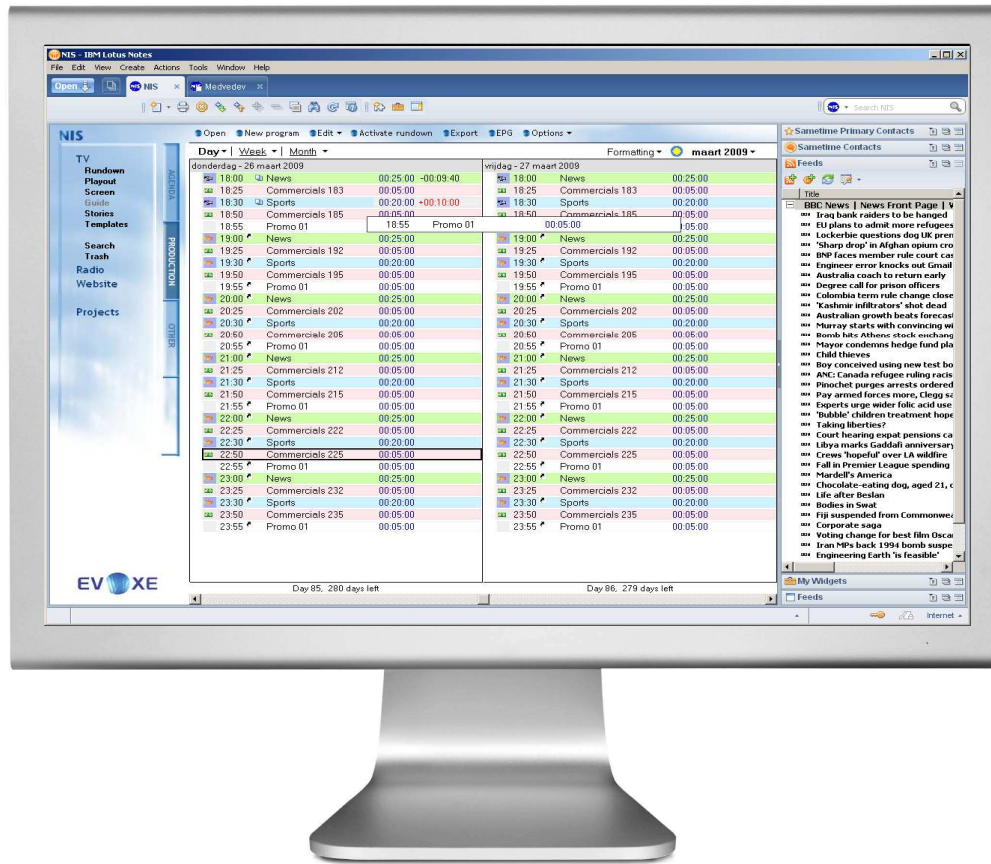
Editing the schedule — Efficiently and reliably manage the schedule using tools to copy, paste and move programmes in the schedule with ease. NIS4 provides automated assistance when you wish to insert or remove a re-run or a series. Icons combined with background and text colours help you, including the indication of over and under-runs.

Building and viewing the Electronic Programme Guide - Select which programmes are to be listed on the EPG using a simple tick-box in the appropriate Programme Cards. Small blue squares next to the NIS4 Guide programme listing clearly indicate which programmes are in the EPG. Easily jump to an EPG view at the click of a button.

Exporting to external systems, such as EPG or web CMS — Manually or automatically export your schedule to multiple third party systems. Automatic exports can be configured for set times before on-air or as changes are made. Manual export is achieved by simply selecting the system from the Export menu. Couldn't be easier.

Please note that the role, workflow and tasks described above are indicative only. NIS4 provides a flexible platform in which the way that your newsroom operates can easily be mapped, bringing the NIS4 efficiency, productivity and reliability benefits to your organisation.



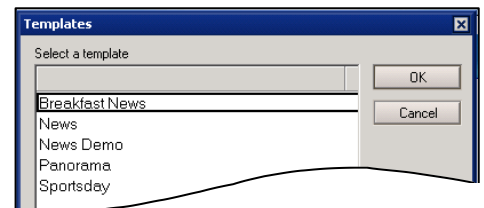
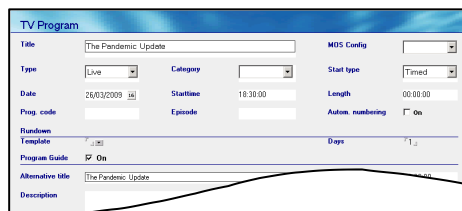
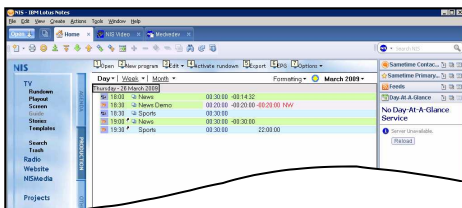


The Schedule Manager's NIS4 desktop

PROGRAMME GUIDE

PROGRAMME CARD

PROGRAMME TEMPLATES



A Schedule can be quickly built-up on the NIS4 Guide with copy, paste, paste rerun, move and other controls. A colour scheme and icons assist understanding. You can start with an imported schedule from, say, an airtime sales system, copy across schedules from other days or week, and/or manually build.

For each programme on the schedule there exists a Program Card (TV, Radio, Web etc). To create a new Program Card is a single click on the top menu. Enter the title, type (live, server etc), category (commercial, documentary etc), start type (tied, chained, manual) and all the other Program information.

For Programs that have rundowns, templates can be pre-configured and selected from a pull-down menu in the Program Card. This may include Breakfast, Lunchtime and Evening News, Panorama and Sports day. These Rundowns will later be populated by the news team on the day of broadcast.

Please note that the NIS4 desktops shown and described above are only some of those that could be used by a schedule manager. Other NIS4 desktops may also be accessed depending on the role definition and workflows you want to implement in your newsroom operation.

